



RO



NF



UF

MBR

TORAY

Innovation by Chemistry



Toray MBR

Submerged PVDF Flat-Sheet Membrane Bioreactor Module

Toray MBR

60 years of Pioneering Towards Sustainable Water

Toray Industries, Inc. has been developing water treatment membranes since 1968. Today, we have been offering a full lineup of membranes backed by our sixty years of experience. Our advanced membrane technologies and global operations ensure the success of any project.

At the Toray Group, we consider sustainability to be the most important global issue of the 21st century.

Toray's Sustainability Vision for water treatment aims to triple the water treated annually with our membranes by 2030 (compared to 2013). We will continue to provide advanced membrane technology such as RO membranes, further strengthen our technical services, and contribute to solving water problems worldwide.

Toray MBR accumulated plant capacity :

1,100,000 m³/day

(March, 2022)



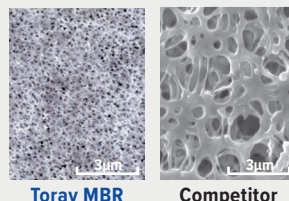
Toray MBR Characteristics

Why Flat Sheet MBR? Why Toray MBR?

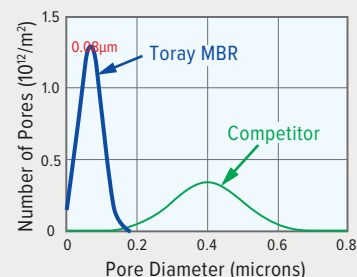
Toray PVDF flat sheet membranes for MBR applications combine the best features of flat plate and hollow fiber technologies, such as durability, ease of use, less stringent screening requirement, small footprint, and low energy consumption. The membrane's pores are small and uniform, resulting in increased smoothness of the membrane surface leading to excellent low fouling capabilities. Compared to conventional flat plate series, Toray's NHP flat sheet technology has increased the normalized membrane area by 50%, reduced module weight by 70%, and reduced energy consumption by 30%.

- Simple construction
- Low fouling potential
- Less Pretreatment Required
- Low chemical cleaning frequency
- No backwash, High Recovery
- Low O&M costs

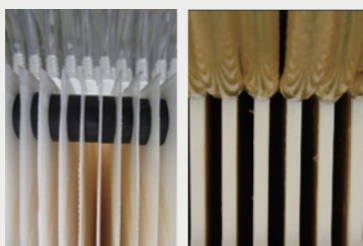
FE-SEM of Membrane Surface



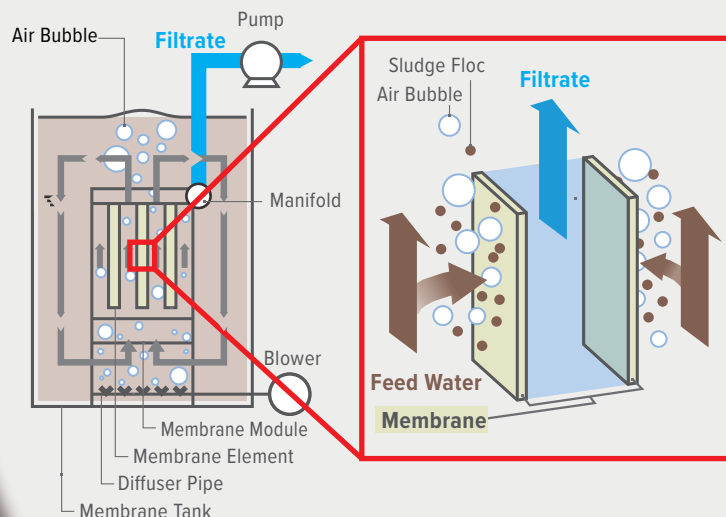
Pore Size Distribution



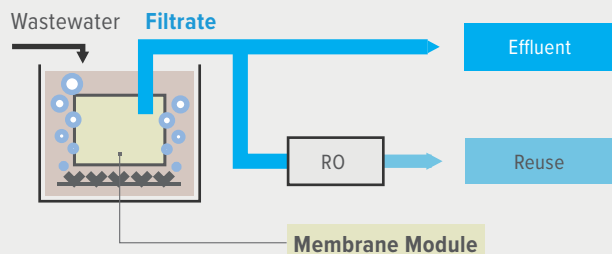
Comparison of Membrane Thickness



Function Image of Membrane Element



Filtering Process



Specifications

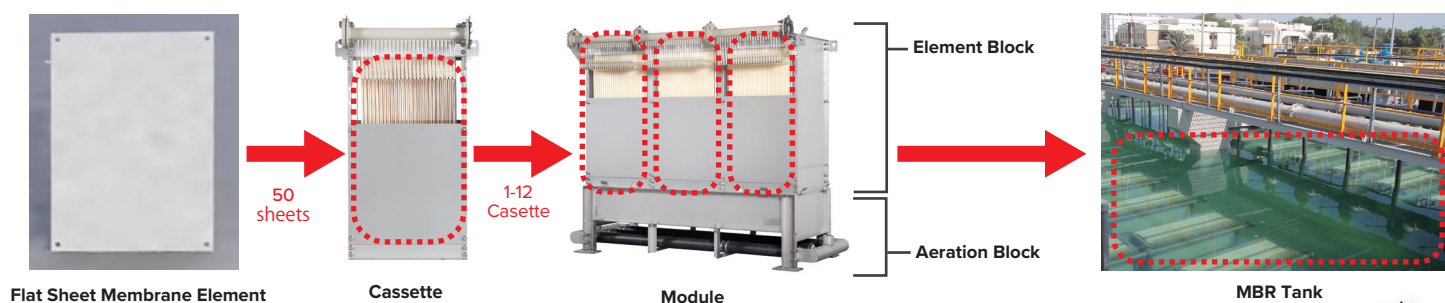


Series		NHPA-series		NHP210-series
Flat Sheet Element Model		TSP-50080		
Nominal Pore Size	μm	0.08		
Effective Membrane Area	m ² (ft ²)	0.7 (7.5)		
Dimensions (w X l X thk)	mm (in.)	480 X 800 X 1.8 (18.9 X 31.5 X 0.07)		
Materials	Membrane	PVDF and PET non-woven fiber		
	Nozzle	PE		

Series			NHPA-series						NHP210-series	
Module Model			NHPA-050-1C	NHPA-100-1C	NHPA-150-1C	NHPA-150-2C	NHPA-150-3C	NHPA-150-4C	NHP210-300S	NHP210-600D
Scouring Air Flow Rate	NL/min/Module (ft³/min/Module)		330-670 (12-24)	670-1,340 (24-48)	1,000-2,000 (35-71)	1,000-2,000 (35-71)	1,300-2,000 (46-71)	1,300-2,000 (46-71)	1,000-2,000 (35-71)	1,300-2,000 (46-71)
Number of Membrane Elements			50	100	150	300	450	600	300	600
Cassette Structure	Cassette X Deck		1 X 1	2 X 1	3 X 1	3 X 2	3 X 3	3 X 4	3 X 2	3 X 4
Total Membrane Area		m² (ft²)	35 (377)	70 (753)	105 (1,130)	210 (2,260)	315 (3,391)	420 (4,521)	210 (2,260)	420 (4,521)
Dimensions	Width	mm (in)	738 (29.1)	738 (29.1)	763(30.0)	763(30.0)	763(30.0)	763(30.0)	770(30.3)	770(30.3)
	Length	mm (in)	660 (26.0)	1,130(44.5)	1,617(63.7)	1,617(63.7)	1,617(63.7)	1,617(63.7)	1,635(64.4)	1,635(64.4)
	Height	mm (in)	1,404 (55.3)	1,404 (55.3)	1,404 (55.3)	2,304(90.7)	3,204(126.1)	4,104(161.6)	2,175(85.6)	3,845(151.4)
Dry Weigh	Module	kg (lbs)	70 (154)	110(243)	170(375)	285(628)	400(882)	515(1,135)	235(518)	430(948)
Material	Frame		304 stainless steel (316 SS optional)							
	Manifold		Polypropylene or ABS							
	Air Diffuser		304SS (316SLSS is available as option)				Polypropylene		Polypropylene (SS optional)	
Connection	Manifold		ANSI 1 1/2 inch flange using M12 bolts/nuts, One flange per deck (2C: 2 pcs per module, 3C: 3 pcs per module, 4C: 4 pcs per module)							
	Air Diffuser		ANSI 1 1/4 inch flange using M12 bolts/nuts, Two flanges per aeration block			ANSI 1 1/2 inch flange using M12 bolts/nuts, Two flanges per aeration block				
Operating temperature Range	Temperature	°C (°F)	5-40 (41-104)							
	pH of Liquid		5-10							
	MLSS	mg/L	Not higher than 18,000							
	Transmembrane Pressure	kPa (psi)	Not higher than 20 (2.9)							

Toray MBR Components

Toray MBR is comprised of a cassette containing 50 flat sheet MBR membrane elements and a module containing 1 to 12 sets of cassettes. The module consists of an element block containing a cassette and an aeration block that holds an air diffusion pipe. Once assembled, the module is submerged in the MBR tank.



Product Offering

Our broad lineup, now including the "NHPA-series", covers everything from small to large configurations to meet customer needs. Replacing the TMR series, or other flat plate products, is fast, easy, and significantly increases capacity within the same module volume. Please contact us for details!



GLOBAL LOCATIONS

HEADQUARTERS Tokyo, Japan : +81-3-3245-4542

THE AMERICAS

California (TMUS) : +1-858-218-2360

EUROPE & SUB-SAHARAN AFRICA

Switzerland (TMEU) : +41-61-415-8710

Spain (TMSP) : +34-915-726-504

MIDDLE EAST

Saudi Arabia (TMME) : +966-13-568-0091

United Arab Emirates (TMME) : +971-4-392-8811

ASIA PACIFIC

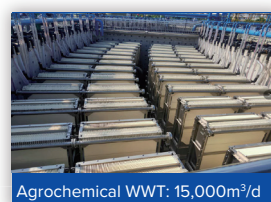
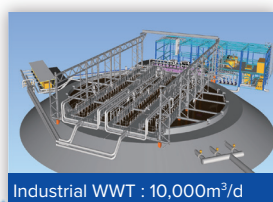
China (TBMCI) : +86-10-8048-5216

Singapore (TAS) : +65-6226-0525

South Korea (TAK) : +82-2-3279-1000

Toray MBR Installations

Case Studies →



- 35 Sales Office
- 6 Production Base
- 4 R&D Laboratory



* WWT : Wastewater Treatment
* WWR : Wastewater Reuse

